



PanoramiX Mapping



Fugro is the exclusive provider of Panoramix, a revolutionary airborne mapping solution that combines high resolution panoramic digital imagery with powerful 3D mapping and visualization software.

Mapping all the Angles

Giving new meaning to the “map once, use many times” credo, Fugro EarthData’s one-of-a-kind Panoramix mapping system is the latest achievement in a long history of innovation. Panoramix collects imagery with a 110-degree panoramic field of view, resulting in a truly unique panoramic data capture. Combined with powerful 3D mapping and visualization software, Panoramix provides users with a customizable and complete end-to-end solution.

The Panoramix Advantage

From a single airborne mission, the system is capable of collecting stereo imagery of the ground with a 55-degree sweeping view on either side of nadir. Panoramix can output image frames at any user-defined angle from within that panoramic sweep. From the high-resolution vertical and oblique imagery, we can deliver photogrammetrically accurate orthoimagery, obliques, and 3D terrain data. The data can be viewed interactively using PX Mapper, our user-friendly 3D mapping software that completes the Panoramix solution. Advantages include:

- **Flexible image acquisition.** Mapping every angle of a given landscape, acquisition can be customized to fit user needs.
- **Fast, efficient operations.** Operating at a higher altitude than standard systems, Panoramix acquires data quickly and efficiently.
- **License-free map products.** With full ownership of project deliverables, clients benefit from unlimited use of their data.

These revolutionary capabilities combine to provide unique solutions for property assessment, asset inventory, emergency and law enforcement, facility management, public works and infrastructure development, land-use management, 3D modeling, and change detection analysis, among other applications.



Panoramix data of the US Naval Academy, Annapolis, Maryland, USA.



Panoramix imagery along the coast of South Carolina, USA.



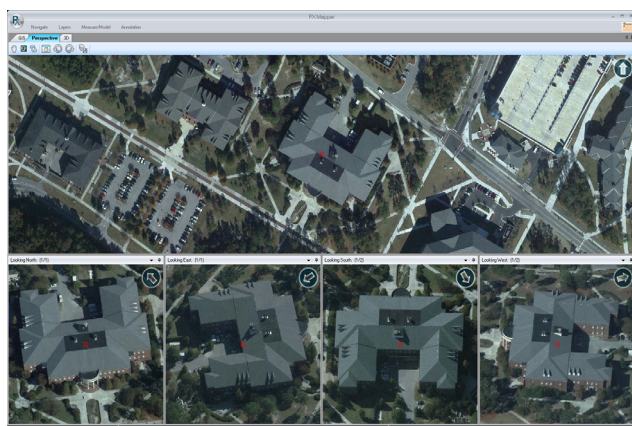
PX Mapper’s 3D modeling capabilities using Panoramix imagery.

PanoramiX Mapping

The PanoramiX Solution

With a single dataset, PanoramiX answers the needs of multiple users, providing a true photogrammetric solution, from aerotriangulation through image rectification. High-resolution, high accuracy products include digital orthoimagery and Panoramic (oblique) imagery, with pixel resolutions of 1-inch to 1-foot, all which meet ASPRS and NMAS accuracy standards. Completing the solution are PX Mapper® software licenses that accompany all deliverables. Additional PanoramiX value-added products include:

- Color stereo pairs
- Digital elevation models
- Detailed 3D building models
- Topographic contours
- Planimetric data layers
- Land-use/ Land-cover



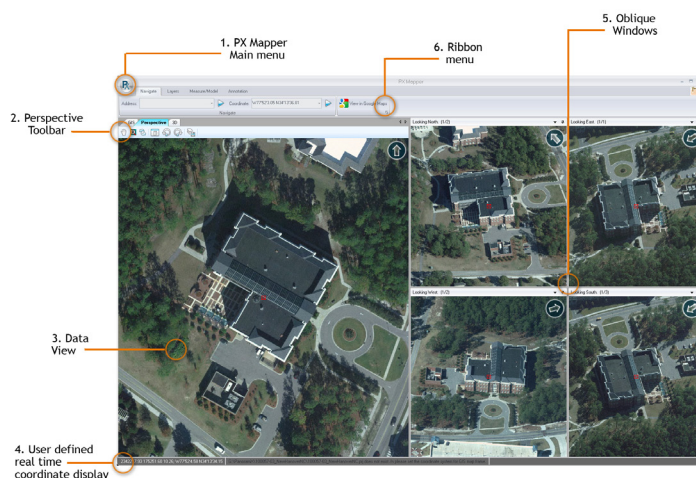
(Top) PanoramiX imagery synchronized with a digital orthophoto in PX Mapper, designed for ease of viewing, analyzing, and extracting of 3D geospatial information from the data. (Right) Diagram of PanoramiX imagery within the PX Mapper software, illustrating various features of the interface.

Power of PX Mapper

Fugro's PX Mapper software is delivered as an integral part of the PanoramiX solution, providing robust capabilities for image viewing and exploitation. PX Mapper allows GIS users and non-specialists alike to observe up to five views simultaneously, including orthophotos and all four PanoramiX looks. This ArcGIS compatible software also combines other geospatial data sources to serve a wide range of decision-making needs.

Built directly into PX Mapper are easy-to-use analyzing and visualizing tools allowing customers to:

- View every image of every building, structure, or ground point quickly and efficiently
- Conduct horizontal, vertical, range and bearing, and facade measurements
- Load shapefiles over data for query and extraction of 3D geospatial information
- Generate textured 3D models easily and accurately
- Locate and annotate building and ground features
- Integrate with existing ArcGIS databases to fully exploit geospatial data



Fugro EarthData, Inc.

7320 Executive Way, Frederick, MD 21704 • +1 301 948 8550
 3600 Jet Drive, Rapid City, SD 57703 • +1 605 343-0280