

# FUGRO EARTHDATA IN FOCUS

## Products and Services Experience



### PRODUCTS AND SERVICES

#### Photogrammetry

- Conventional aerial photography
- Digital imaging
- Digital orthophotography
- True orthoimagery
- Topographic mapping (DTM, contours)
- Planimetric mapping

#### Lidar Mapping

- Topographic mapping (DEM, contours)
- Lidar intensity imagery
- Land-use/land-cover data (for floodplain mapping)

#### GeoSAR Radar Mapping (exclusive provider worldwide)

- IFSAR data collection and processing (dual-band, single-pass)
- High-resolution orthorectified radar imagery (X- and P-band)
- High-resolution DEM above (X-band) and beneath (P-band) vegetation
- Derived products (thematic maps; including topographic line maps, contours etc.)

#### Image Classification and Photointerpretation

- Airborne, satellite, hyperspectral, thermal imagery
- Benthic habitat mapping
- Land-use/land-cover mapping
- Change detection
- Wetlands mapping
- SAV mapping (submerged aquatic vegetation)
- Object-oriented classification
- CART analysis (classification and regression tree)

#### GIS

- Planning and zoning tools
- 3D modeling and visualization
- Commercial real estate solutions
- Geospatial business intelligence
- Enterprise GIS design and implementation
- Applications development
- Data migration and update
- Maintenance and support
- Web-based analyses

#### Rapid Response Mapping

- Geospatial preparedness
- Rapid mobilization
- Crisis support
- Large special event security support

#### Research and Development

- Sensor system development and upgrades
- Advanced technologies evaluation and integration
- New product development
- Production process development and support

#### Specialized Products

- DICM/ICM (digital image city map)
- DOQQ (digital ortho quarter quadrangle)
- DTED 1, 2, 3 (digital terrain elevation data level 1, 2, or 3)
- ERS (engineering route studies)
- E-charts (electronically transmitted data charts)
- FD (feature data)
- JOG (joint operations graphic)
- LAMP (low-altitude mapping process/transportation)
- TLM (topographic line map)
- UFD (urban feature data)
- VITD/ITD (vector interim terrain data)

Fugro EarthData can provide additional geospatial services through the Fugro network of companies, including but not limited to:

- Hydrographic survey
- High-density lidar for corridor mapping (FLI-MAP)
- Bathymetric lidar
- OmniStar worldwide differential GPS services

### REPRESENTATIVE EXPERIENCE

#### Federal Government Agencies

- Federal Emergency Management Agency (FEMA)
- National Geospatial-Intelligence Agency (NGA)
- National Guard Bureau (NGB)
- National Oceanic and Atmospheric Administration (NOAA)
- National Park Service (NPS)
- Tennessee Valley Authority (TVA)
- US Air Force (USAF)
- US Army Corps of Engineers (USACE)
- US Army Topographic Engineering Center (TEC)
- Bureau of the Census (BOC)
- US Department of Agriculture (USDA)
- US Department of Homeland Security (DHS)
- US Department of Transportation (DOT)
- US Geological Survey (USGS)
- US Navy (USN)

#### State Governments

- Arkansas
- California
- Delaware
- Florida
- Indiana
- Maryland
- Michigan
- Mississippi
- North Carolina
- South Carolina
- Tennessee
- Vermont
- Virginia

#### Local Governments

- Allegany County MD
- Anne Arundel County MD
- Baltimore MD
- Beaufort County SC
- Biddeford, ME
- Boston MA
- Brevard County FL
- Broward County FL
- California Geological Survey
- Carteret County NC
- Centralina Council of Governments (CCOG) NC
- Charlotte County FL
- Charlestown RI
- Chicago IL
- Columbia SC
- Cook County IL
- Cumberland County NC
- Dallas TX
- Fairfax County VA
- Ft Lauderdale FL
- Gaston County NC
- Guilford County NC
- Greensboro NC
- Hanover County VA
- Harrisburg PA

#### Local Governments continued

- Hillsborough County FL
- Howard County MD
- James City County VA
- Lee County FL
- Los Angeles CA
- Las Vegas Valley Water District
- Maryland National Capital Park and Planning Commission (MNCPPC)
- Mecklenburg County NC
- Memphis TN
- Miami FL
- Miami-Dade County FL
- Montgomery County MD
- Nashville TN
- New York NY
- North Myrtle Beach SC
- Osceola County FL
- Orlando FL
- Park City UT

#### Private Sector

- Aiken Electric Cooperative
- AKRF Architects
- Allegheny Energy Service Corporation
- American Forests
- BAE Systems
- Brooklyn Digital Foundry
- Cape Road Productions
- C B Richard Ellis
- Consolidated Edison Company of New York
- Dewberry & Davis
- Environmental Simulation Center
- Extell Development Company
- Florida Power & Light Company
- Google
- Gradient Microclimate Engineering
- Grubb & Ellis
- Harris Corporation
- Industrial Light & Magic
- Michael Baker Jr.
- Microsoft Corporation
- New York Power Authority

#### International

- Australia
- Argentina
- Bahamas
- Bahrain
- Belgium
- Bermuda
- Bolivia
- Bosnia-Herzegovina
- Cameroon
- Cape Verde
- Colombia
- Egypt
- France
- Germany
- India
- Iraq
- Ireland
- Ivory Coast
- Japan
- Lithuania
- Mexico
- Morocco
- The Netherlands
- Nigeria
- Pakistan
- Papua New Guinea
- Peru
- Philippines
- Portugal
- Qatar

#### International continued

- Russia
- Serbia (Kosovo)
- South Africa
- Spain
- Sri Lanka
- Suriname
- Tanzania
- Thailand
- United Kingdom
- Uruguay
- Venezuela

#### Technology Partners

- Balfour Technologies
- California Department of Conservation
- ESRI
- GeoCue
- Intergraph
- Infoterra France
- Leica Geosystems
- NASA Jet Propulsion Laboratory
- Northrop Grumman TASC
- Technology Services Corporation

#### University Partners

- Mississippi State University
- Purdue University
- The Ohio State University
- University of California at Santa Barbara
- University of New Mexico
- University of South Carolina
- Virginia Polytechnic Institute and State University

### CONTRACT VEHICLES

- Florida Department of Revenue (digital orthophotography mapping contract)
- Florida Division of Emergency Management (subcontractor)
- GSA Schedule 899
- NGA Clear View (subcontractor)
- NGA GGI (subcontractor)
- NGA GGI Niche (prime)
- NGA Next View (subcontractor)
- NOAA Coastal Services Center
- (indefinite delivery contract)
- South Florida Water Management District
- State of Florida IT Consulting (including GIS)
- USACE, St Louis District (indefinite delivery contract)
- USACE, Norfolk District (indefinite delivery contract)

### CONTACT US

Corporate Offices, Frederick MD; 301.948.8550  
www.fugroearthdata.com  
info@fugroearthdata.com



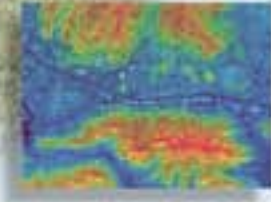
7320 Executive Way  
Frederick, MD 21704  
301.948.8550

## Fugro EarthData

delivers end-to-end solutions  
to serve your **geospatial needs**  
in these applications.

For more than 50 years, Fugro EarthData has crafted mapping and GIS solutions for natural resources management, urban planning, defense, and engineering customers, among others. Our acquisition-to-production resources and continual technology investments enable us to efficiently deliver high quality, end-to-end solutions to meet our customers' geospatial needs. As a member of the international Fugro group of companies, we also have the unique ability to combine our core offerings with an expanded range of onshore and offshore surveying services. Working with customers across the globe, Fugro EarthData is turning spatial data into knowledge...the knowledge you need to make the right decisions.

### FORESTRY MANAGEMENT



### OIL, GAS, AND MINERAL EXPLORATION



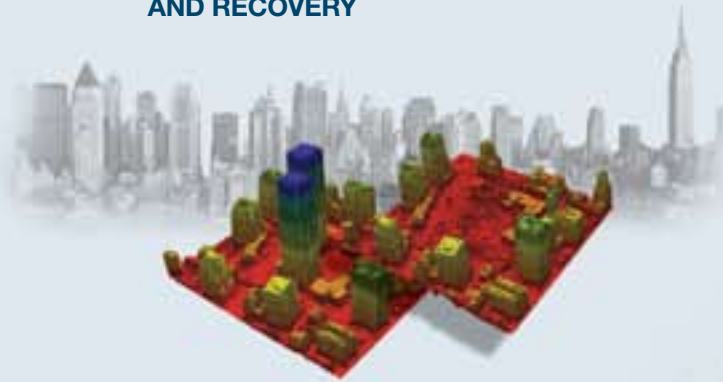
### WATER QUALITY ASSESSMENT



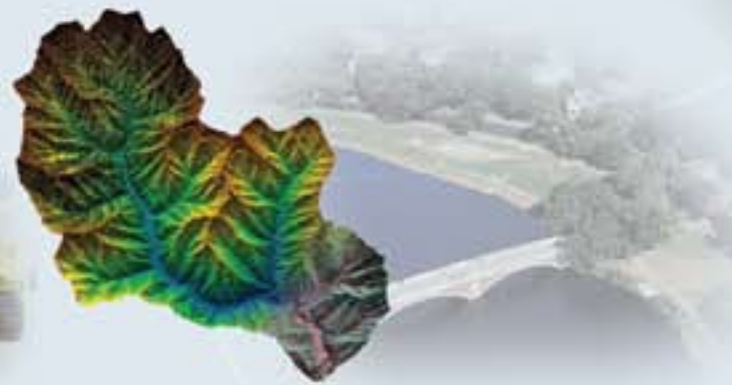
### AGRICULTURE MONITORING



### DISASTER RESPONSE AND RECOVERY



### FLOODPLAIN MAPPING



### COASTAL MANAGEMENT



### REAL ESTATE ASSET MANAGEMENT



### TRANSPORTATION PLANNING



### URBAN PLANNING



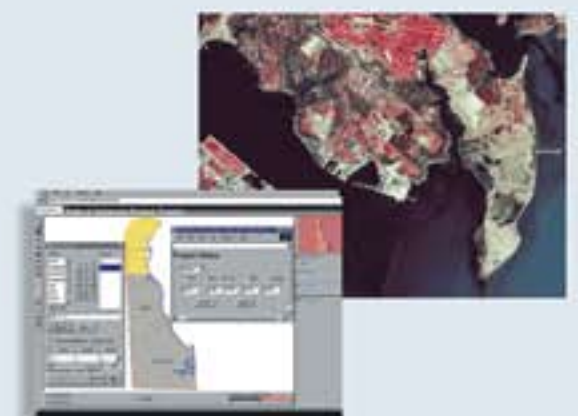
### UTILITY MAINTENANCE



### TELECOMMUNICATIONS NETWORK PLANNING



### ECONOMIC DEVELOPMENT



### DEFENSE AND INTELLIGENCE

